

Big Ten & Friends

Facilities Management Directors Conference

April 9 – 11, 2017

Northwestern University

combines innovative teaching and pioneering research in a highly collaborative environment that transcends traditional academic boundaries.

We provide students and faculty alike with exceptional opportunities for intellectual, personal, and professional growth.



3 campuses located in Evanston and Chicago IL, and Doha, Qatar
50+ research centers and institutes
\$650 million annual research funding

3

campuses

12

schools and colleges

21,000

total enrolled students

3,334

full-time faculty members

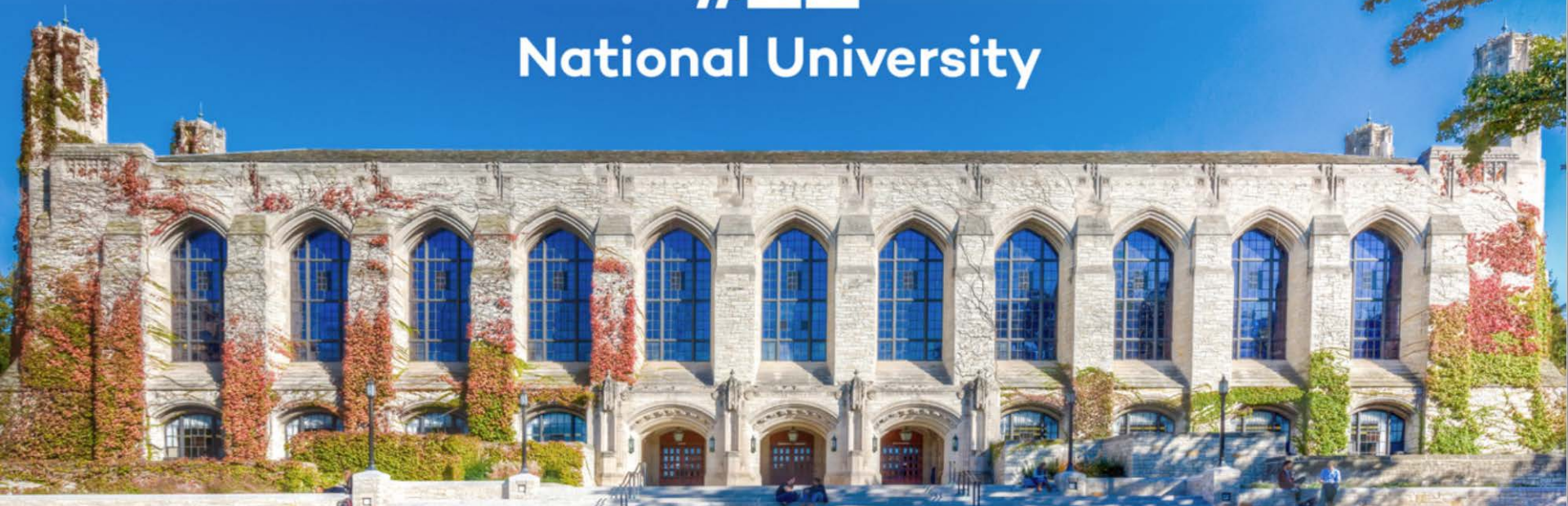
19

intercollegiate athletic
teams

500+

student organizations and
clubs

#12 National University



#4
Materials Science

#4
Business

#7
Industrial Engineering

#7
Chemistry

#10
Education

#12
Biomedical Engineering

Source: U.S. News & World Report 2017

COLLEGES AND SCHOOLS



Weinberg College of Arts and Sciences



School of Communication



School of Education and Social Policy



McCormick School of Engineering and Applied Science



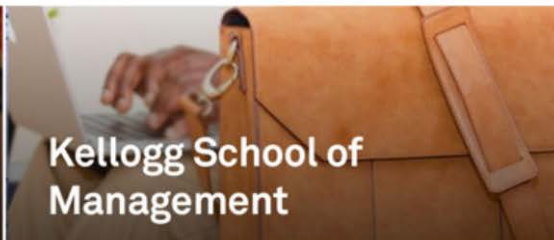
Medill School of Journalism, Media, Integrated Marketing Communications



The Graduate School



Pritzker School of Law



Kellogg School of Management



Feinberg School of Medicine



Bienen School of Music



School of Professional Studies



Northwestern in Qatar



GLOBAL REACH

Chicago and
Evanston
campuses

• Qatar campus

8,000+ undergraduates from all **50** states and **70+** countries
200,000+ alumni, with alumni clubs on three continents
\$100 million Buffett gift earmarked for global initiatives

50+ Research Centers and Institutes



Louis A. Simpson and Kimberly K. Querrey Biomedical Research Center to be completed in 2018

Research fields:

Energy & Sustainability

Humanities

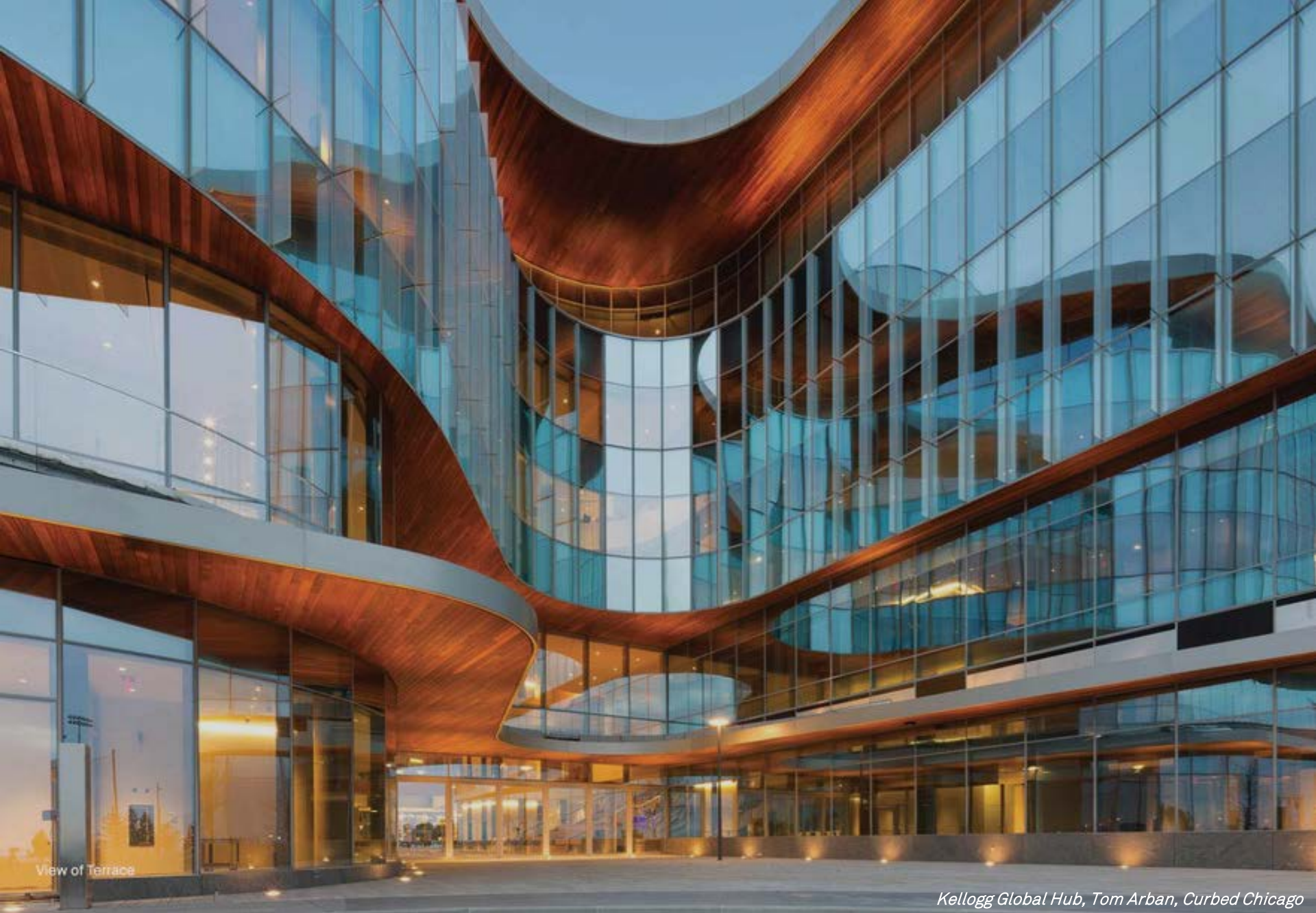
International Relations

Medical and Biological Sciences

Nanoscience

Physical Sciences & Engineering

Social Sciences & Policy



View of Terrace

Kellogg Global Hub, Tom Arban, Curbed Chicago

\$2.1 B

open projects

\$57 M

operations and
maintenance

13

Chicago buildings

200

Evanston buildings

339

full-time equivalent

296

acres

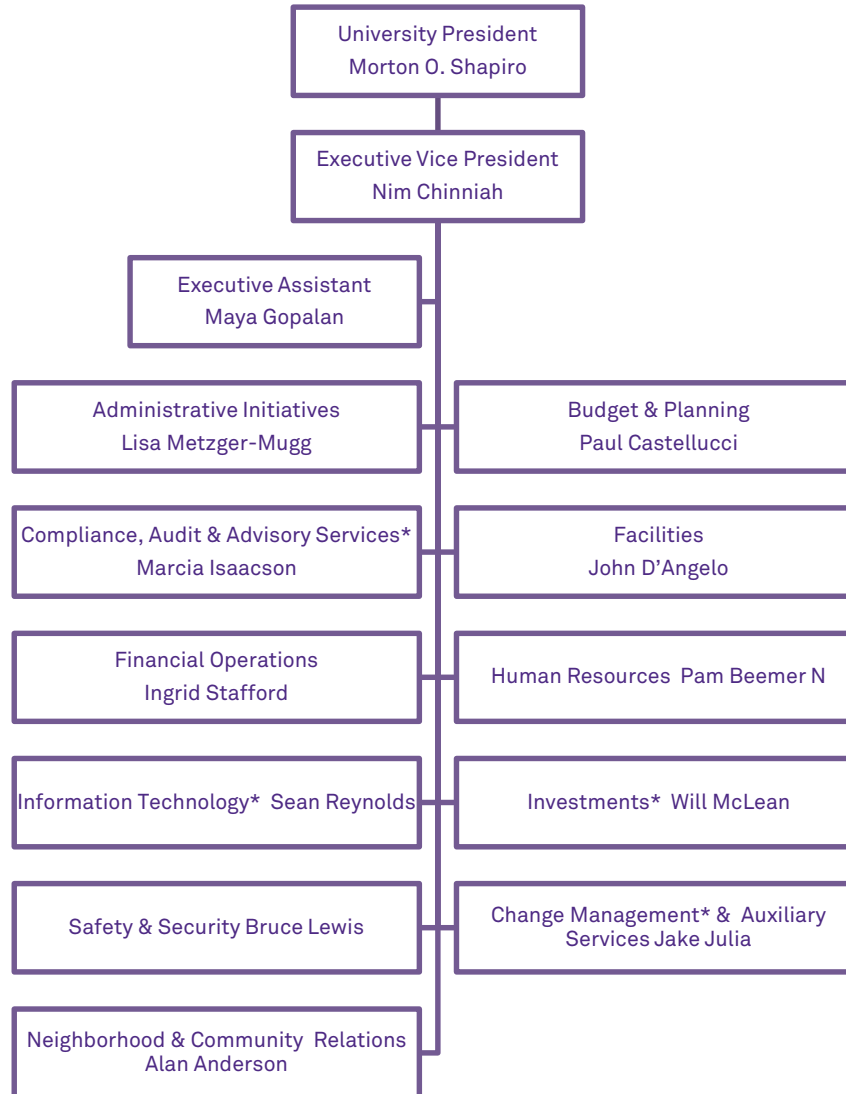
12.4

Million square feet

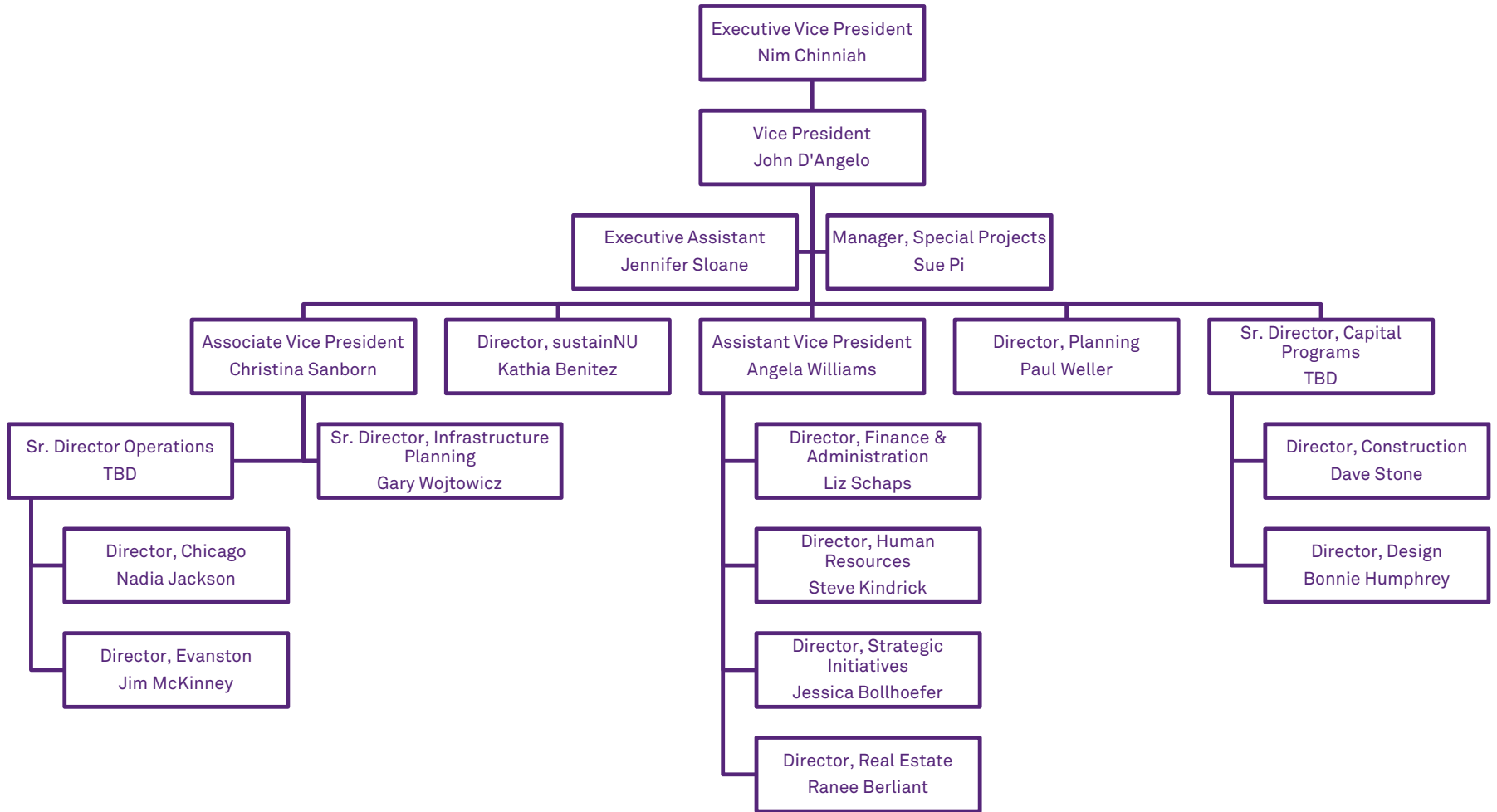
79

open projects

NORTHWESTERN EXECUTIVE OFFICE UNITS



NORTHWESTERN FACILITIES MANAGEMENT

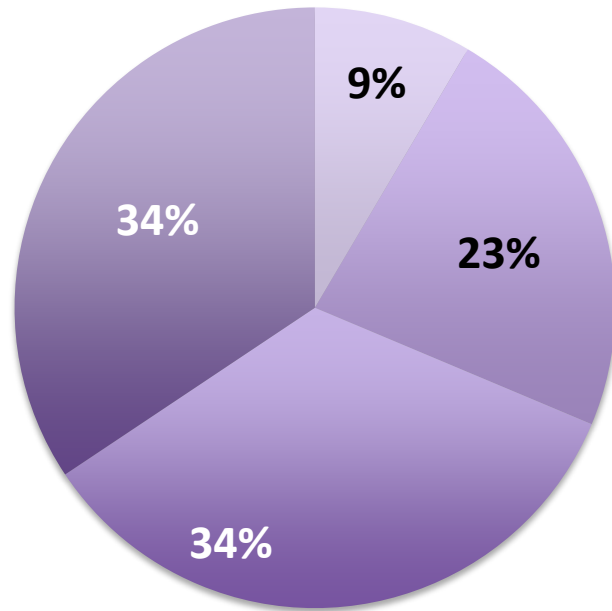




FY16 CAMPUS PROFILE – GARAGES NOT INCLUDED

216 Buildings; 13.6M GSF; Technical complexity 3.55

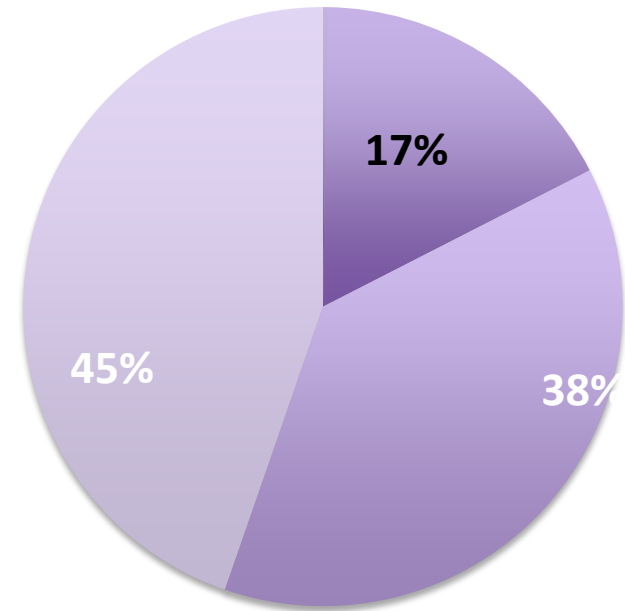
Campus Renovation Age - Evanston



0 to 10
 10 to 25
 25 to 50
 Over 50

Avg. Tech Rating:
3.36

Campus Renovation Age - Chicago



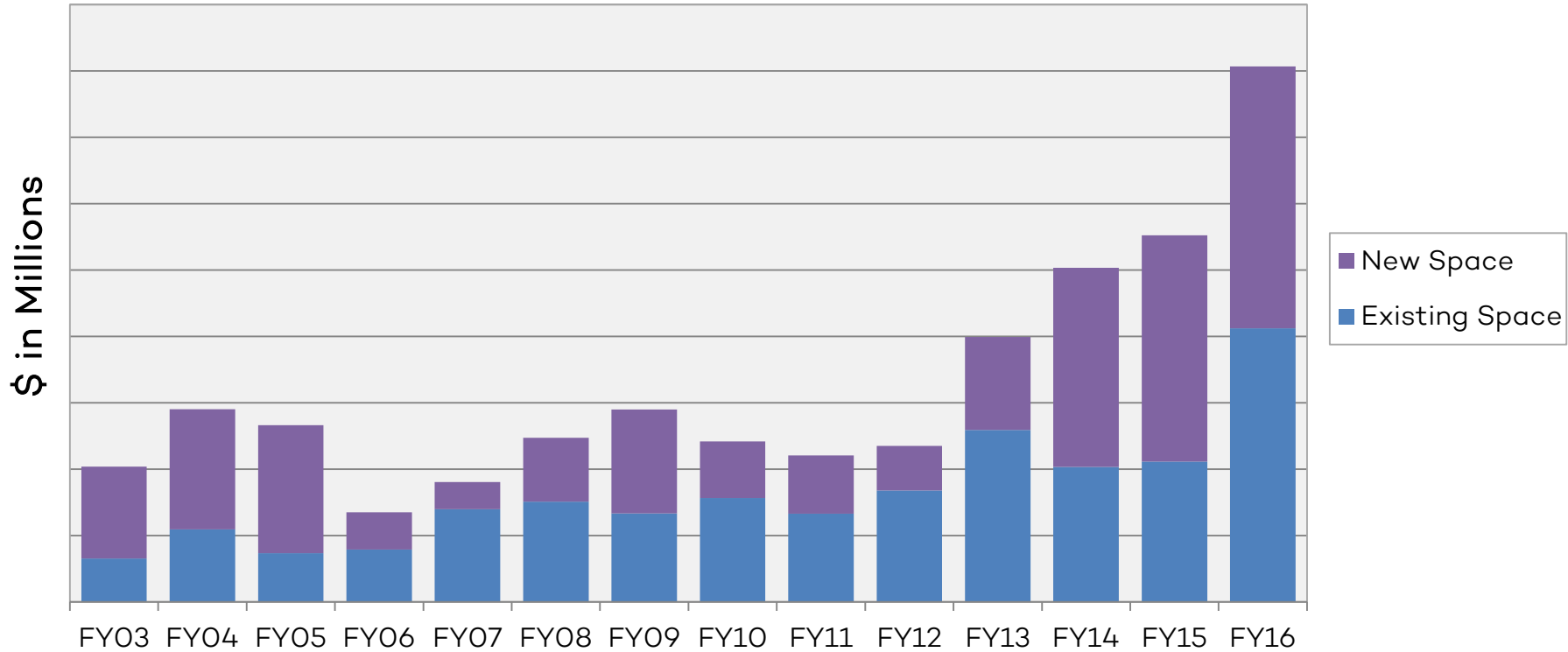
0 to 10
 10 to 25
 25 to 50
 Over 50

Avg. Tech Rating:
4.23



TOTAL PROJECT SPENDING

Northwestern Investment Profile



*Total Project Spending is made up of: Capital Funds, R&R Expenses, Dorms Capital, Planned Maintenance from operating budget , and Painting and Flooring expenses from budget

**Research
Eminence
& Impact**

**Student
Experience**

**Global
Strategy**

Mission

We build and maintain a Northwestern that educates, enriches, & engages

& Vision

We will deliver effective and reliable services as a collaborative and valued partner

WE ARE MOVING FORWARD



WE CONTINUE TO EVOLVE

Focusing on how we work & serve our customers



People

Process

Tools

PROCESS: CREATE ONE PROJECT MANAGEMENT TEAM

How can we ensure consistent results and client experiences by consolidating project management services?

**Organize
into Studios
by client
type**

**Unify Project
Management**

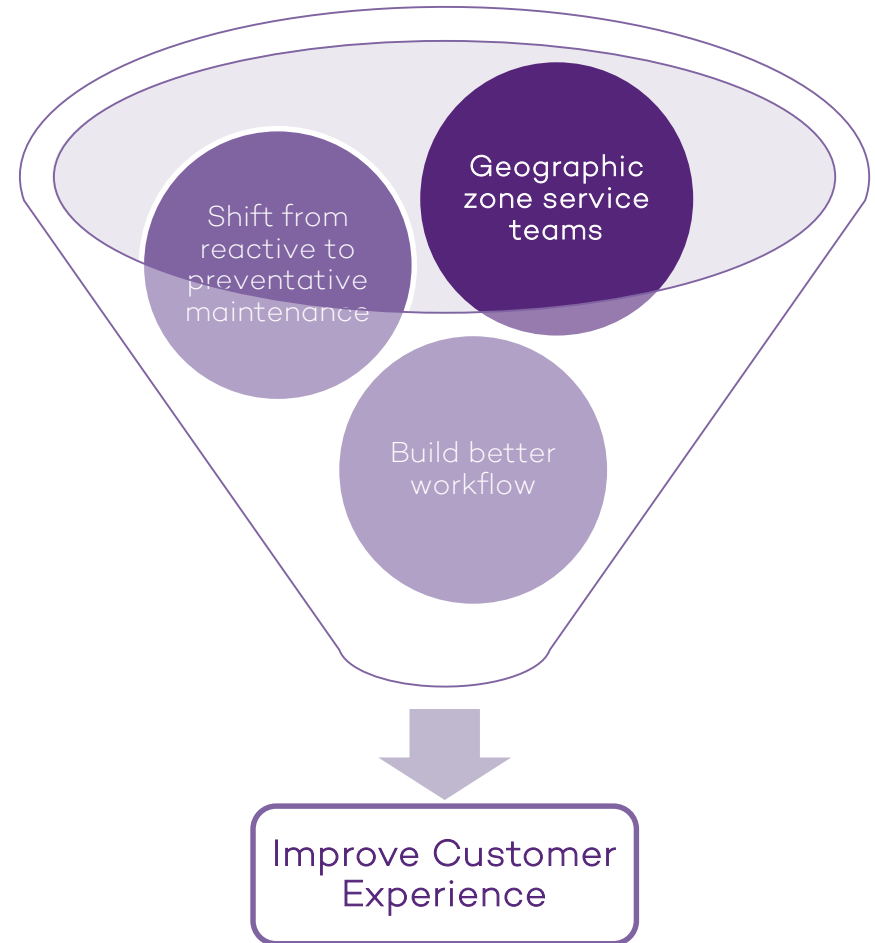
**Create new
supporting
roles**

PROCESS: PROVIDE ZONED CLIENT SERVICE

How can we design service zones to better serve all of our clients?

Key Structural Changes:

- Zoned Client Services:
 - Build familiarity
 - Foster staff ownership
 - Provide site-specific solutions
 - Leverage and develop team expertise
- Zone Service Managers
 - Build relationships with stakeholders
 - Prioritize and coordinate work with occupants
- Work Control Center
 - Support estimating and work scheduling
 - Plan and schedule preventive maintenance



PROVIDE ZONED CLIENT SERVICE

Evanston Campus

Zones 1-5

- Electrical & Engineering in 5 zone hubs

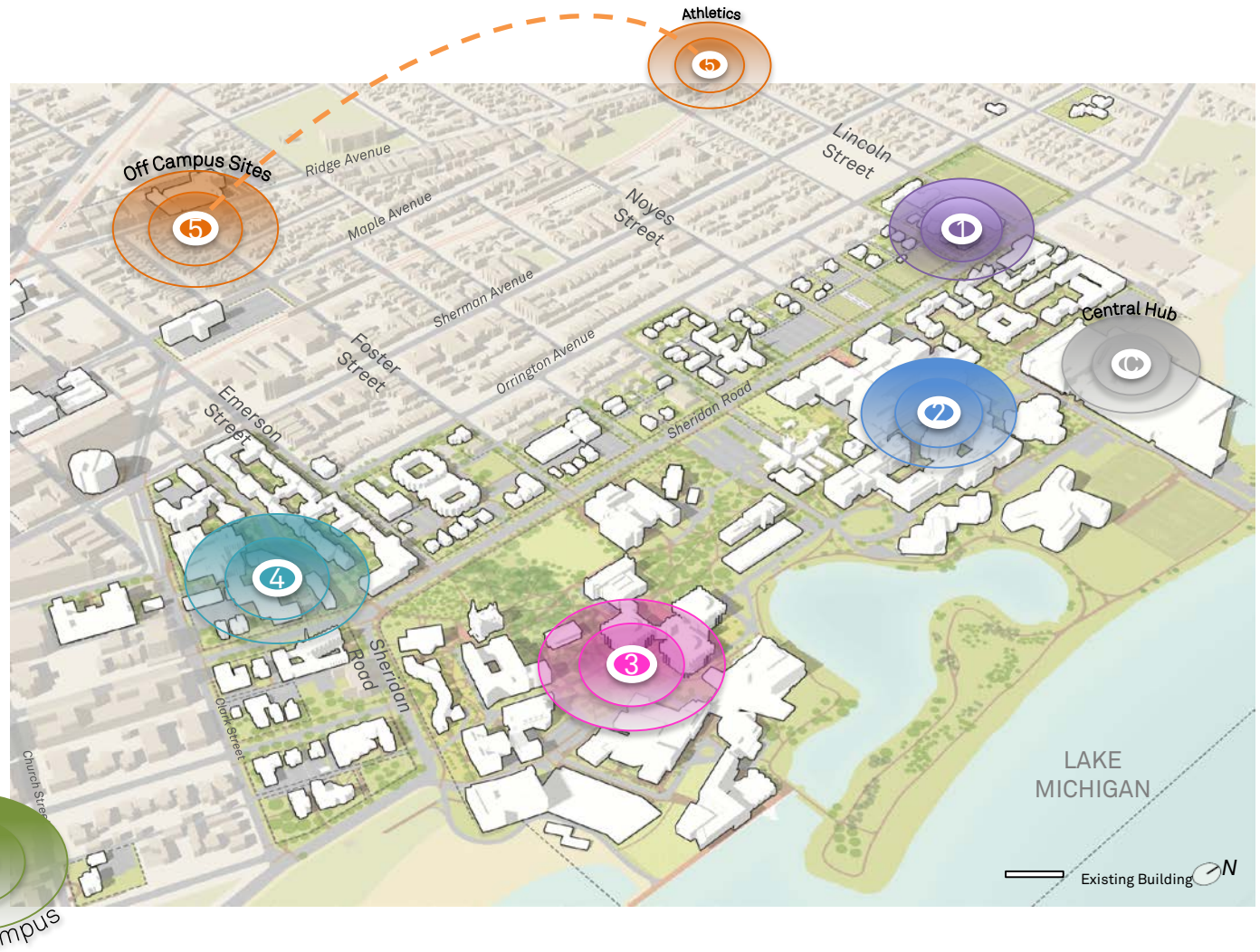
Central Hub

- Electrical, Engineers, Carpentry, Paint & Lock shops, Warehouse, and Shift Staff

Chicago Campus

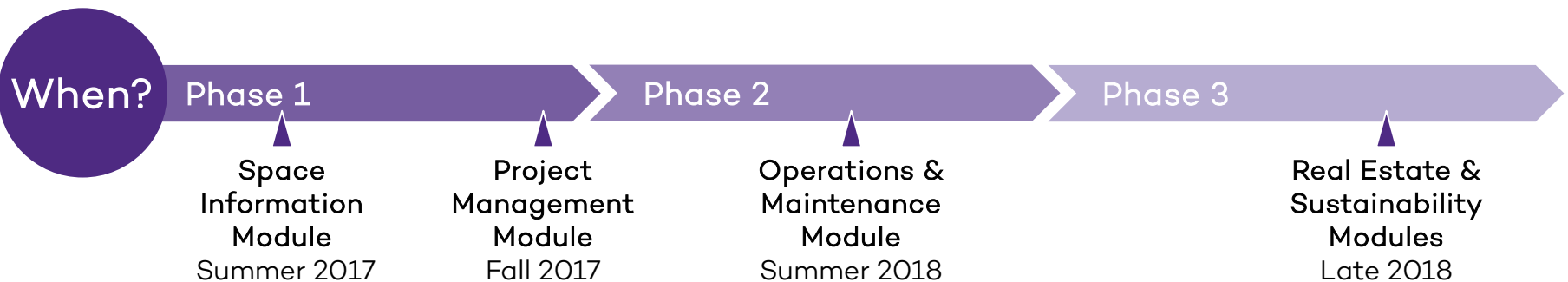
Zone 6

- Model for Evanston



Northwestern | FACILITIES CONNECT

Facilities Connect is a new web-based portal to simplify and streamline access to Facilities Management information and services



sustainNU GOALS

At least a 2% annual energy reduction

Short term: 20% energy reduction / square foot by 2020 from 2010

Long term: 80% energy reduction by 2050 One solar array per year





Kellogg Global Hub, Tom Arban, Curbed Chicago

Informatics & Analytics

Benchmarking & Analytics for Big Picture Thinking

What exactly is Big Data?

Leveraging Data to Manage Teams and Functions

KPI

Accessing Information to Support Daily Operating & Transactions

IWMS Systems

- Public/ Private Partnerships
- Managing Scheduler Performance
- Comparing Notes - Building Analytics Skills



Congratulations
Ford!

- Post Big 10 Meeting Groups
 - Work Control Group
 - Campus as a Lab Community (Princeton)
 - Composting Work Group
- Document Reference – Website
- APPA Voting
- Hosting Next Year



Kellogg Global Hub, Tom Arban, Curbed Chicago